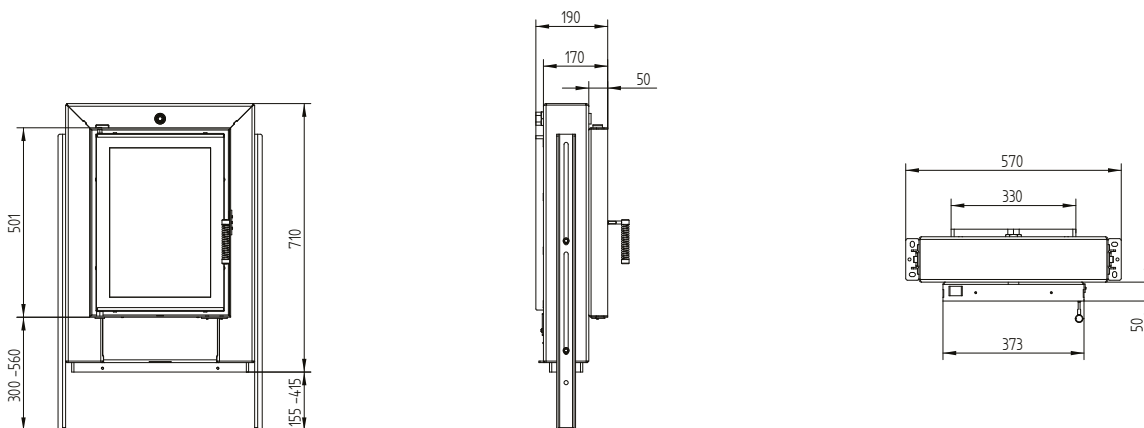


Technical data

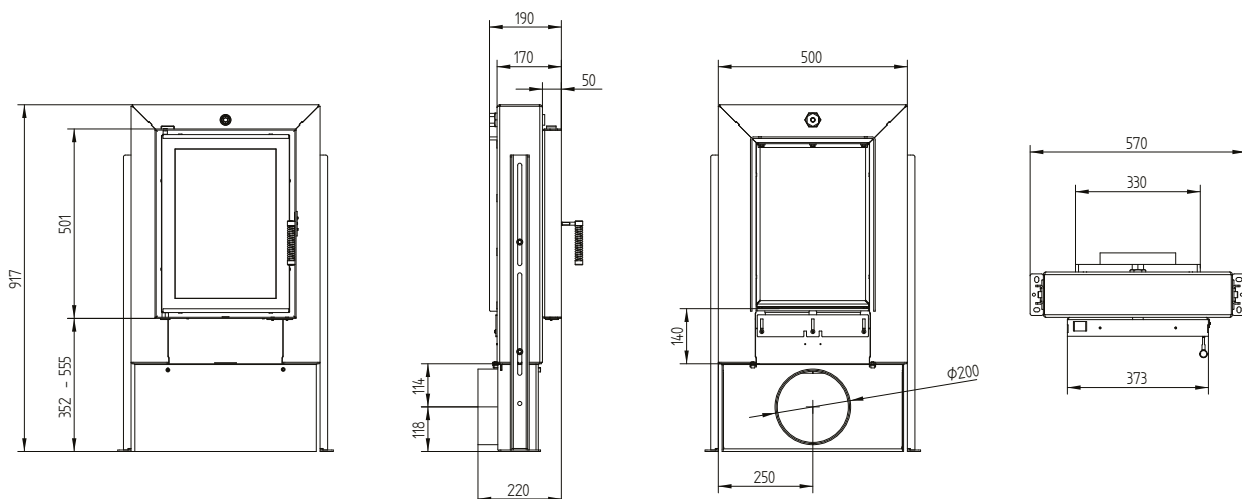
General technical information	
Recommended wood load	10 kg
Cross section of combustion air opening	172 cm ²
Optional combustion air adapter	Ø 150 mm
Pressure loss	see table
Free glass area	1 148 cm ²

Quantity	Volume flow		Pressure loss
10 kg	92,1 m ³ /h	0,026 m ³ /s	3,7 Pa
15 kg	138,2 m ³ /h	0,038 m ³ /s	5,4 Pa
20 kg	184,3 m ³ /h	0,051 m ³ /s	8,4 Pa
24 kg	221,2 m ³ /h	0,061 m ³ /s	11 Pa

GT 37/50 15a without air control



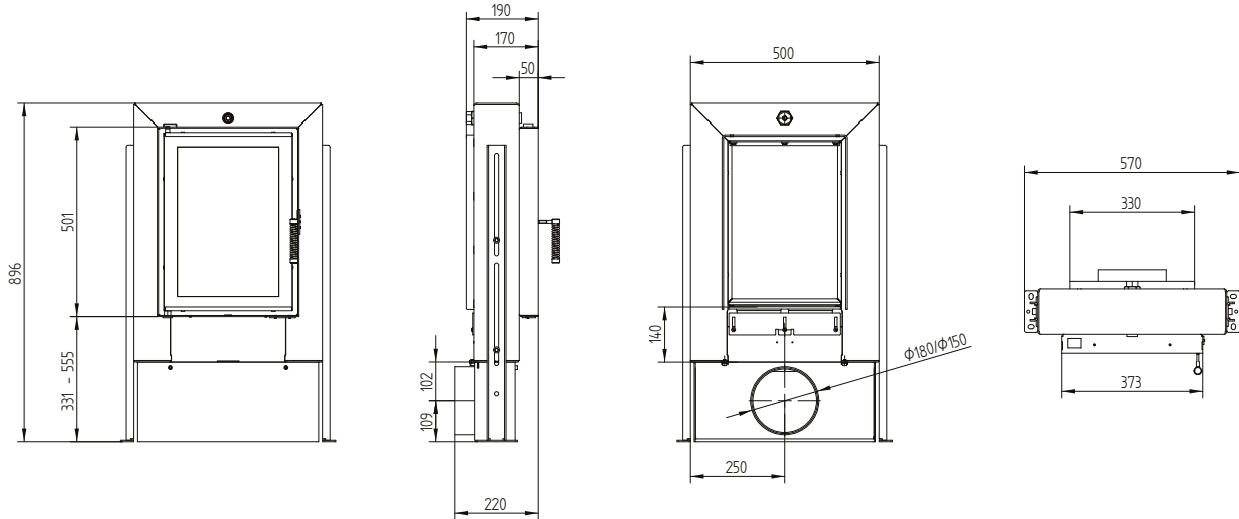
GT 37/50 15a without air control with external air connection Ø200 mm



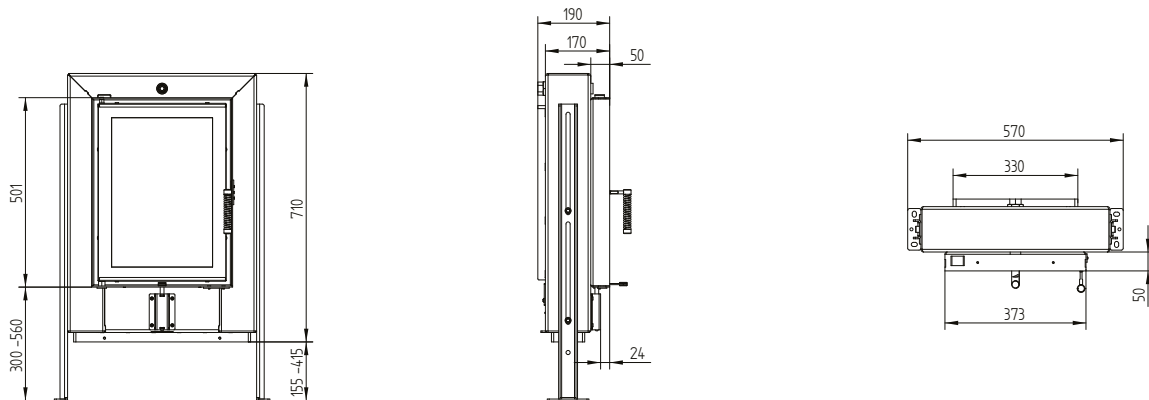
GT 37/50 15a

Technical data
Version 09/2023

GT 37/50 15a without air control with external air connection Ø180/150 mm



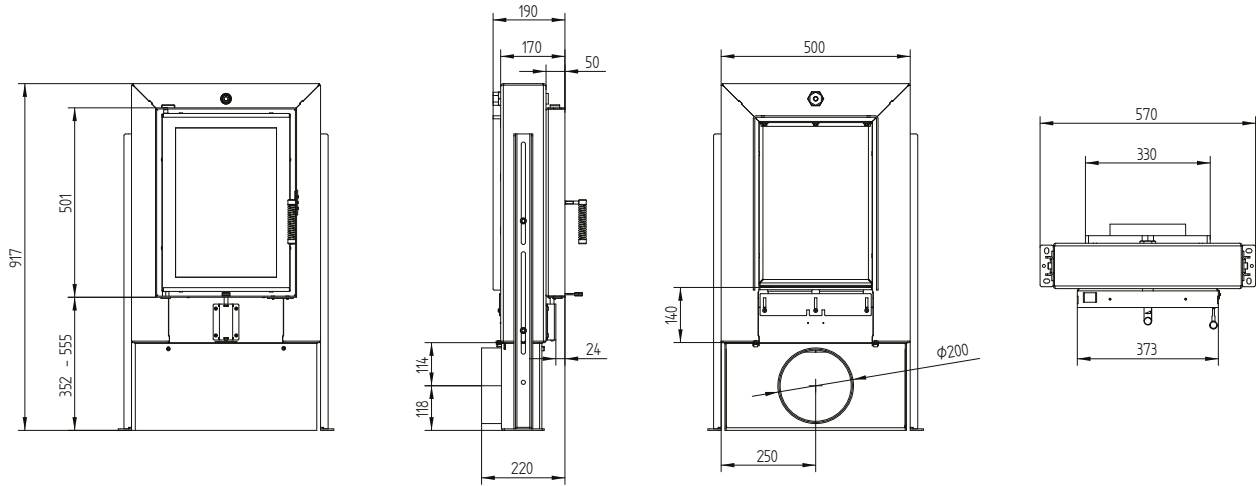
GT 37/50 15a with air control



GT 37/50 15a

Technical data
Version 09/2023

GT 37/50 15a with air control with external air connection $\varnothing 200$ mm



GT 37/50 15a with air control with external air connection $\varnothing 180/150$ mm

