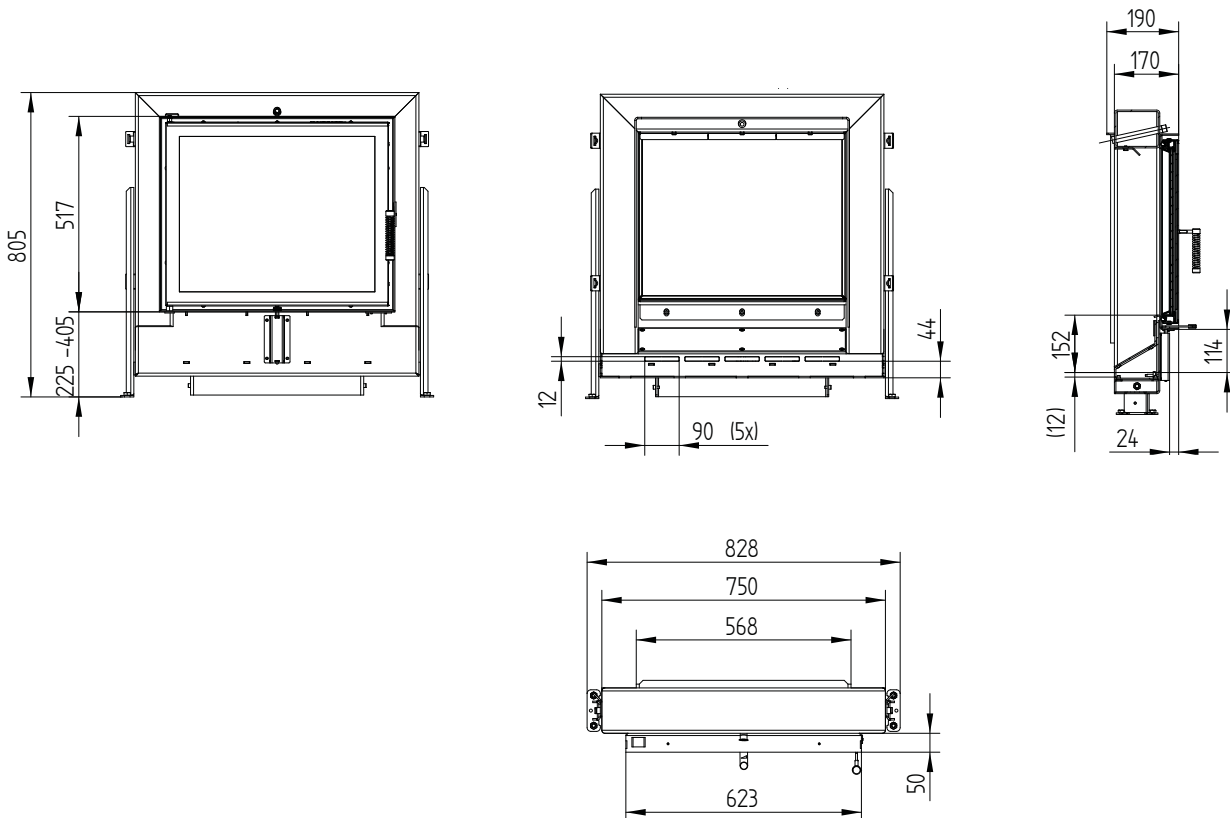


## Technical data

General technical information	
Recommended wood load	15 kg
Cross section of combustion air opening	240 cm <sup>2</sup>
Optional combustion air adapter	2 × Ø 125 mm, 1 × Ø 180 mm
Pressure loss	see table
Free glass area	2 226 cm <sup>2</sup>

Quantity	Volume flow		Pressure loss
5 kg	47,0 m <sup>3</sup> /h	0,013 m <sup>3</sup> /s	1,5 Pa
6 kg	56,3 m <sup>3</sup> /h	0,016 m <sup>3</sup> /s	2,2 Pa
7 kg	65,7 m <sup>3</sup> /h	0,018 m <sup>3</sup> /s	3 Pa
8 kg	75,1 m <sup>3</sup> /h	0,021 m <sup>3</sup> /s	3,8 Pa
9 kg	84,5 m <sup>3</sup> /h	0,023 m <sup>3</sup> /s	4,6 Pa
10 kg	93,9 m <sup>3</sup> /h	0,026 m <sup>3</sup> /s	5,5 Pa
11 kg	103,3 m <sup>3</sup> /h	0,029 m <sup>3</sup> /s	6,5 Pa
12 kg	112,7 m <sup>3</sup> /h	0,031 m <sup>3</sup> /s	7,5 Pa
15 kg	140,9 m <sup>3</sup> /h	0,039 m <sup>3</sup> /s	10,7 Pa

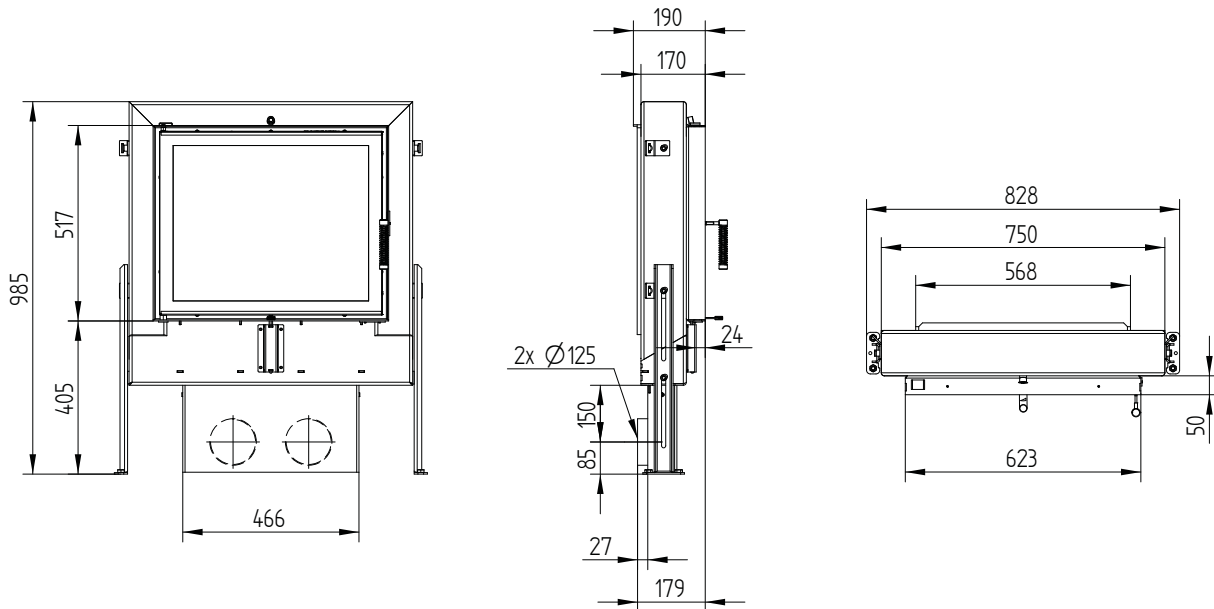
## GT 63/51



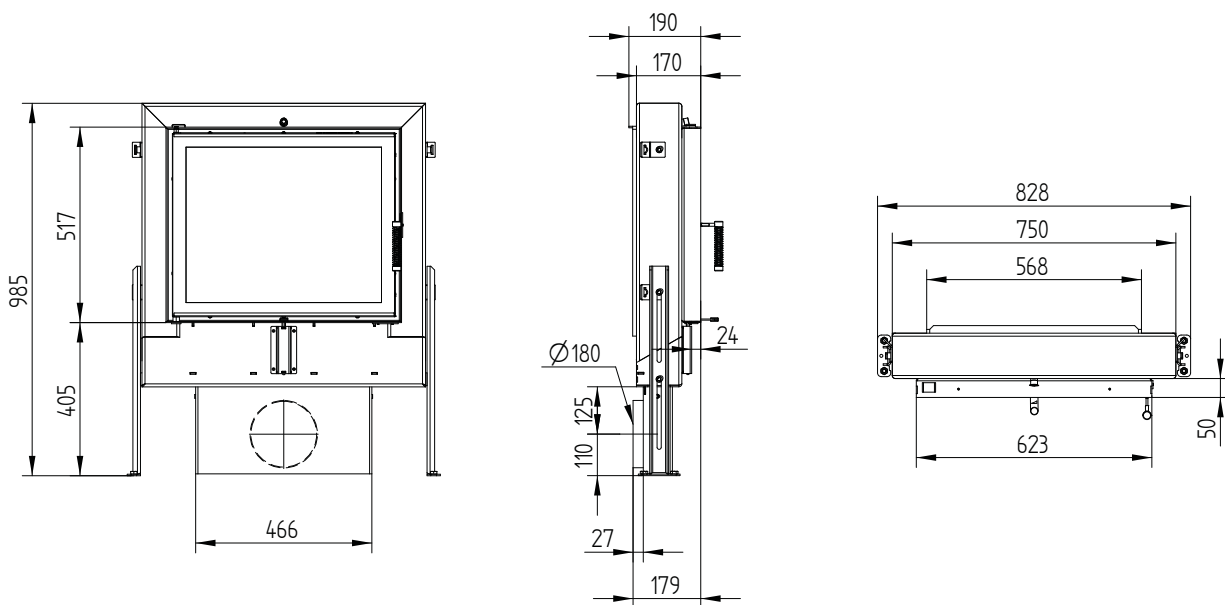
# GT 63/51

Technical data  
Version 09/2023

## GT 63/51 with external air connection 2 x Ø 125 mm



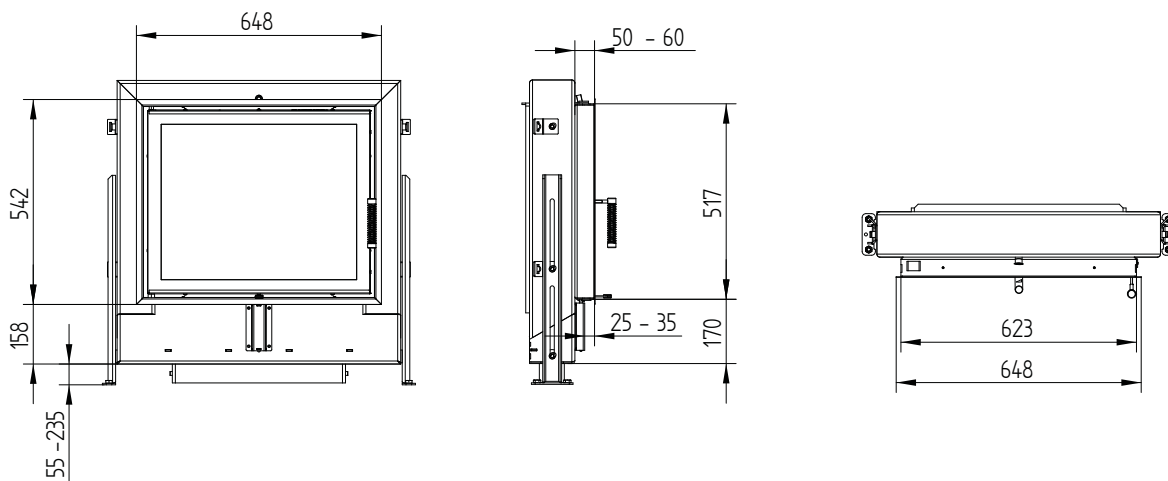
## GT 63/51 with external air connection 1 x Ø 180 mm



# GT 63/51

Technical data  
Version 09/2023

## Cover frame 63/51 4sides 50 mm 1 x 90°



## Cover frame 63/51 4sides 80 mm 2 x 45°

